

SPECIFICATIONS

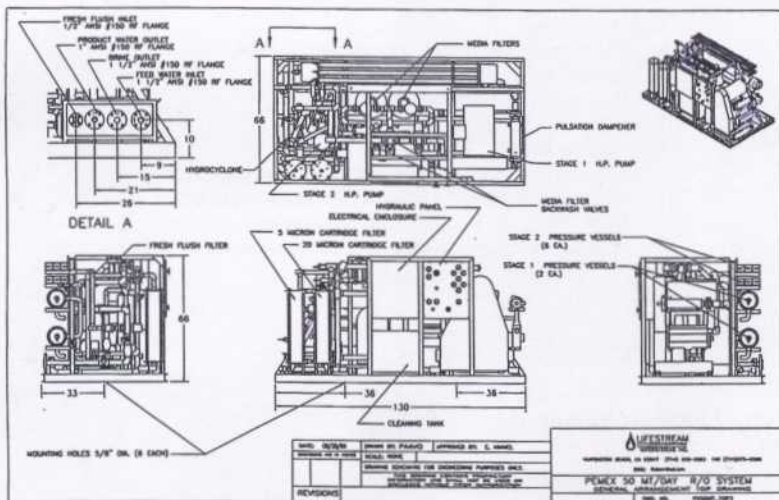
SW8 COMMERCIAL DUTY

REVERSE OSMOSIS SEAWATER DESALINATION SYSTEMS

11,000 TO 31,600 GPD

Lifestream Watersystems Inc. SW8 Commercial Duty Seawater Desalination Systems have been developed to supply potable water from seawater to small communities, factories, boats, barges, condominium complexes, oil drilling platforms, hotels and many other land based applications. The units are frame mounted and include multimedia filters, 20 and 5 micron cartridge filtration, reverse osmosis unit, membrane cleaning system and crating. The highest quality components have been selected for the rugged duty that is required for the water purification applications of the SW8 systems.

MODEL #	PRODUCT OUTPUT			WEIGHT	FEED-FLOW GPM	PWR KW	QTY. MEMBR
	GPD	TPD	LPH				
SW811K----	11,000	42.0	1723	3,500 LBS.	32	17	3
SW814K----	14,500	55.0	2272	4,000 LBS.	32	17	4
SW821K----	21,000	80.0	3290	4,400 LBS.	42	22	5
SW826K----	26,400	100.0	4136	4,800 LBS.	52	30	6
SW831K----	31,600	120.0	4963	5,400 LBS.	60	34	10



Lifestream Watersystems Inc.
P.O. Box 634, Huntington Beach, CA 92648
Toll-Free: 800-468-5426 Phone: 714-375-6587 Fax: 714-375-6586
email: LIFSTREM@AOL.COM ■ WEBSITE: <http://www.Lifestreamwater.com>

SW8

11,000 - 31,600 GALLONS/DAY REVERSE OSMOSIS SEAWATER DESALINATION SYSTEMS

STANDARD SYSTEM FEATURES

Multimedia Filter

- ✓ Fiberglass tank prefilter with manual backwash valve to reduce particles to 25 micron (option - automatic backwash valve).

Prefiltration

- ✓ 20 & 5 micron cartridge prefilters to remove particulate matter
- ✓ Filter housing designed for easy filter change.

Booster Pump

- ✓ Corrosion resistant booster pump of centrifugal design.
- ✓ Ensures positive water pressure to unit.
- ✓ Close coupled to totally enclosed motor to withstand saltwater environment.

High Pressure Pump

- ✓ SS high pressure pump driven by TEFC motor.
- ✓ Pump head placed for easy service and inspection.
- ✓ Ceramic plunger designed with aluminum - bronze head for long term durability
- ✓ Pulsation Dampener to extend life, reduce noise & vibration.

Reverse Osmosis Membrane - Pressure Vessel Assembly

- ✓ Spiral wound, polyamide, thin film composite reverse osmosis membrane representing state of the art technology.
- ✓ High water purity with membrane rejection of 99.6%.
- ✓ Membrane is designed for long life with easy cleaning.
- ✓ Membrane is enclosed in fiberglass pressure vessel with ratings to 1000 psi.
- ✓ Easy to change end plug assembly with long life and durability.
- ✓ SS high pressure fittings.
- ✓ High pressure components rated at 2 times maximum operating pressure for safety.
- ✓ Test taps for sampling membrane product water quality.

Instrumentation & Protective Features

- ✓ Digital salinity controller with readout for temperature and salinity.
- ✓ Unit has multiple fault messages.
- ✓ Remote control panel available (optional)
- ✓ Easy to read gauges including product flowmeter and low and high pressure gauges
- ✓ On/Off switches with built in motor overload protectors.
- ✓ Totalizing hour meter.
- ✓ High pressure valve.
- ✓ Electronic salinity controller to automatically direct product water to waste when non potable or to tank when potable by means of an actuated valve.
- ✓ High quality water indicator lights.
- ✓ All water tight electrical connections (Nema 4).
- ✓ Splash resistant electrical enclosures (Nema 4).
- ✓ Brine check valve ensures only first quality water to storage tank.
- ✓ Glycerine filled high and low pressure gauges for long life.

Frame

- ✓ Epoxy coated aluminum frame for lifetime of durability and corrosion resistance.
- ✓ Open design for easy maintenance.
- ✓ Unitized in integrated components for easy maintenance
- ✓ Secure mounting tabs/holes for stability.
- ✓ Also available in modular format.

Connections

- ✓ Food grade tubing for contact with potable water.
- ✓ Stainless fasteners resist corrosion.

Membrane Care

- ✓ Automatic Backflush System to supply fresh water to membranes upon shutdown (optional).
- ✓ Membrane Cleaning System valving and controls to facilitate chemical cleaning of membranes.

SPECIFICATIONS

Minimum Salt Rejection:	99.6%
Feed Water Pressure:	Minimum - Flooded, Maximum - 25 PSI
Max Operating Pressure:	1000 PSI
Feed Water Temperature:	Minimum - 0°C (32°F) Maximum - 45°C (113°F)
Max Feed Water Salinity:	42,000 PPM TDS
Connections:	2" Flange Feed, 2" Flange Waste, 1" Flange Product
Electrical:	To customer specifications (Nema 4)

Dimensions:

SW811K 14K, 21K Unit:	96" L x 57" W x 66" H
SW11K, 14K, 21K Crate:	116" L x 73" W x 76" H
SW821K, 26K Unit:	132" L x 57" W x 66" H
SW826K, 31K Crate:	152" L x 73" W x 76" H